

How to Install the

<MPCFSIT-Root-CA and the Intermediate Certificate>

Table of Contents

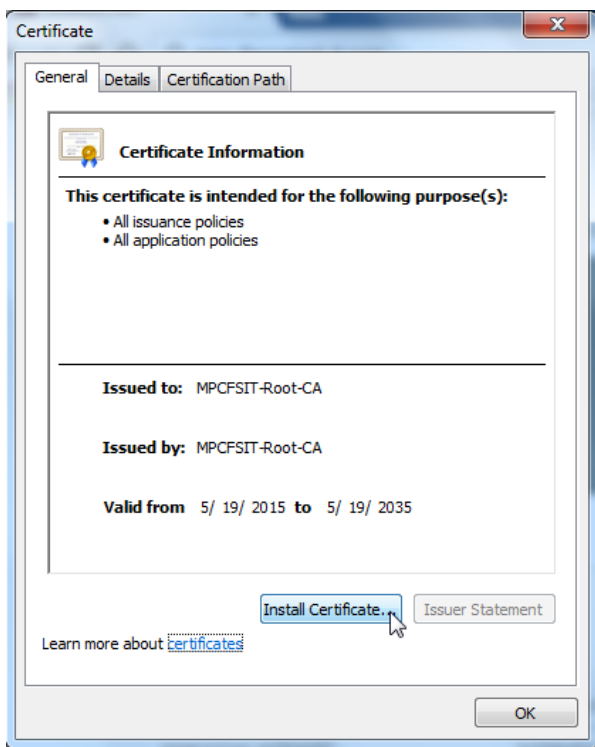
| | | |
|-----|---|---|
| 1 | MPCFSIT-Root-CA..... | 2 |
| 1.1 | How to install | 2 |
| 2 | MPCSFIT-Sub-CA1 (Intermediate Certificate)..... | 5 |
| 2.1 | How to install | 5 |

1 MPCFSIT-Root-CA

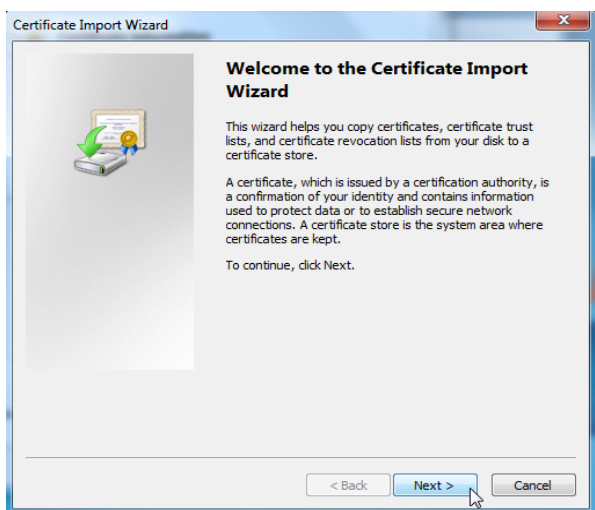
1.1 How to install

After downloading the MPCFSIT-Root-CA.crt you need to double-click the file and the import wizard opens.

It will guide you through the process.

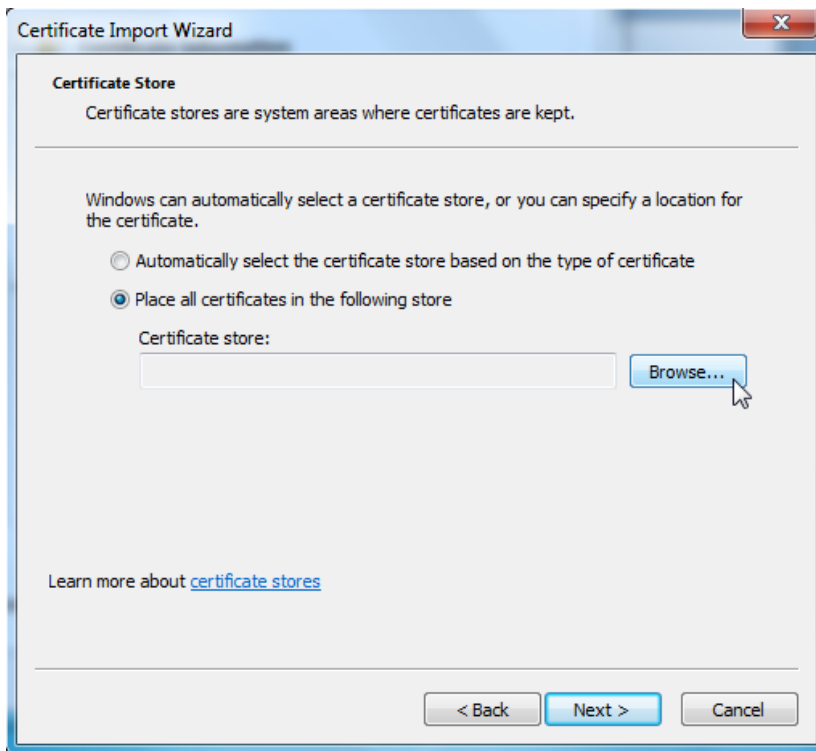


Please press „Install Certificate... “.

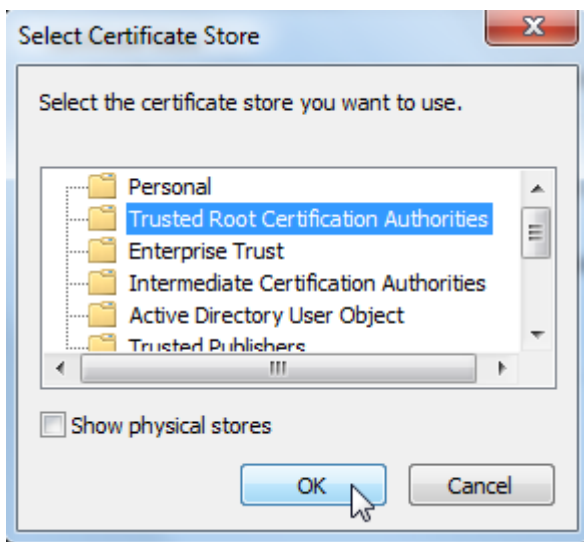


Press “Next”

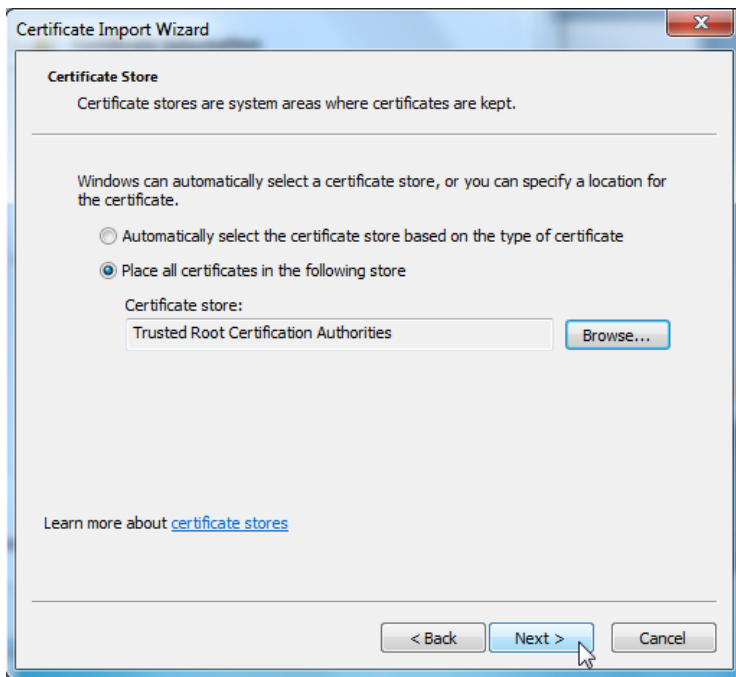
It is important to choose the right Certificate store. By pressing browse you will be prompted a choice of different stores.



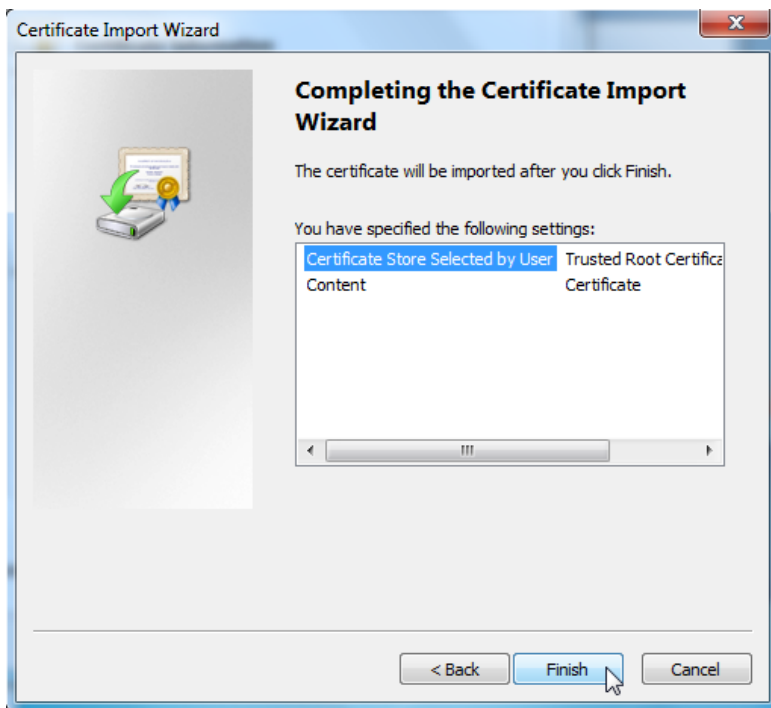
Select **“Place all certificates in the following store”** and click **“Browse...”**



Please choose **“Trusted Root Certification Authorities”**



Press **“Next”**.



Please press **“Finish”** to complete the Import.

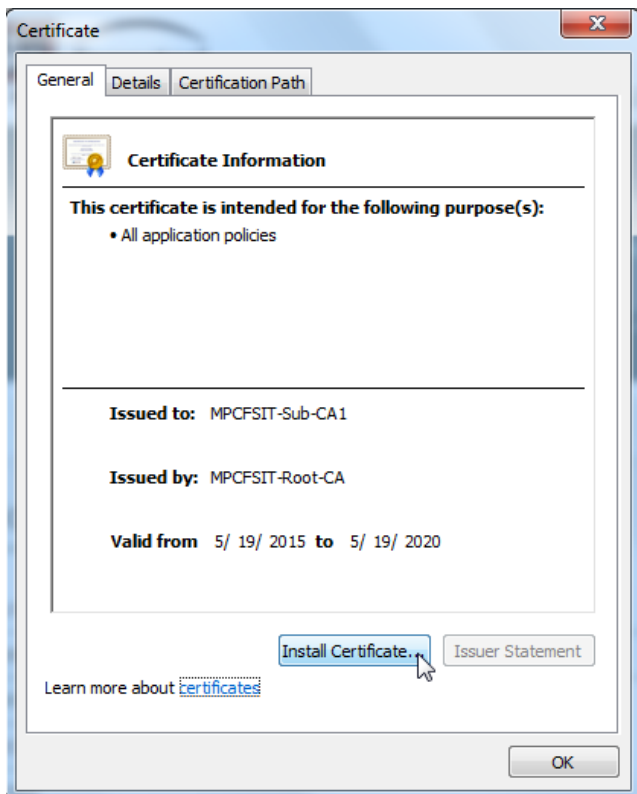
After successful import you will receive a message acknowledging that the import was successful.

2 MPCFSIT-SUB-CA1 (INTERMEDIATE CERTIFICATE)

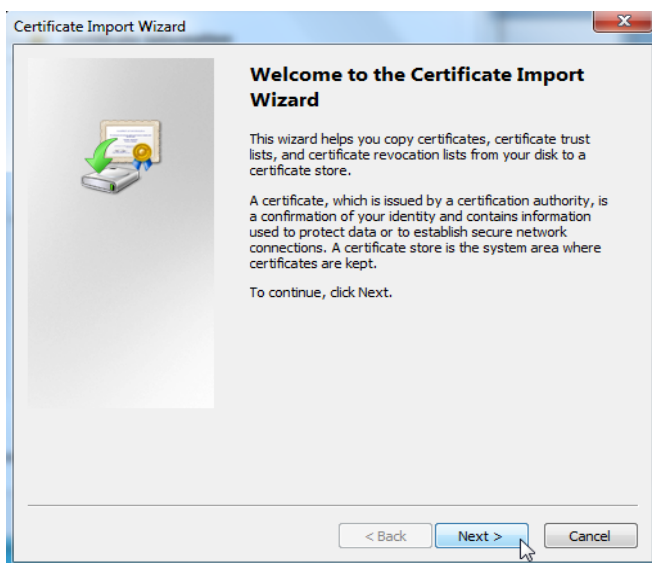
2.1 How to install

After downloading the certificate you need to double-click the file and the import wizard opens.

It will guide you through the process.

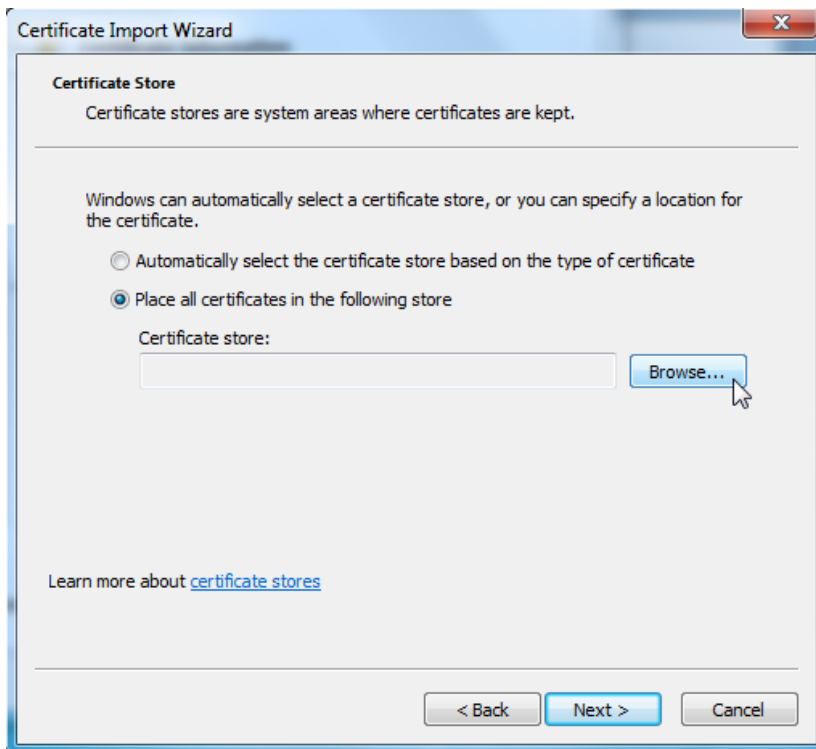


Please press „Install Certificate... “.

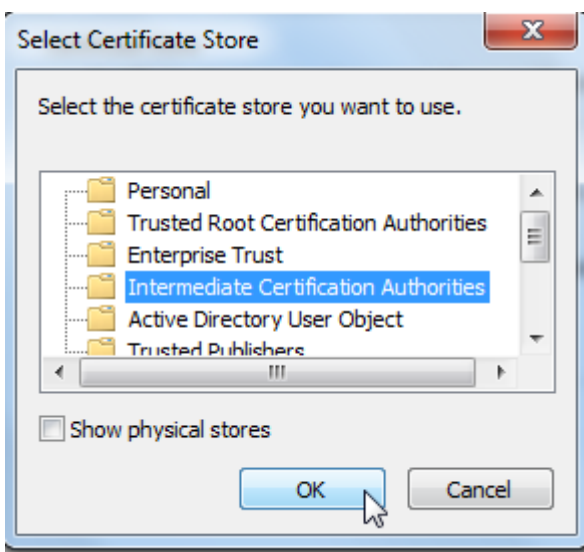


Press “Next”

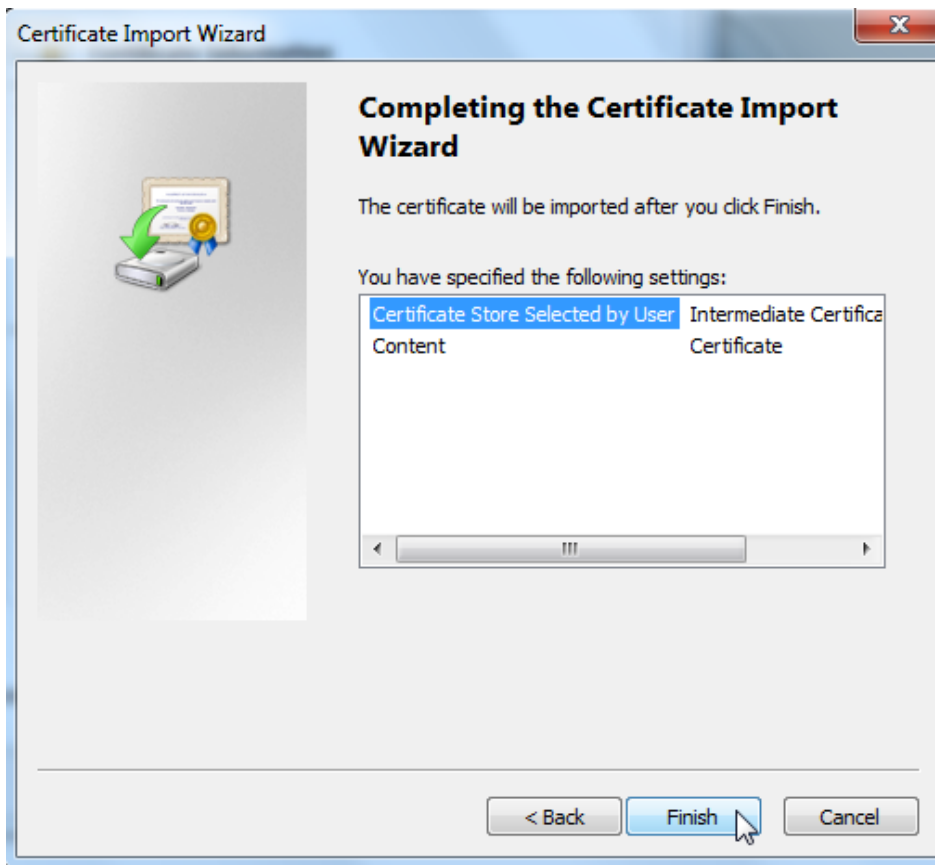
It is important to choose the right Certificate store. By pressing browse you will be prompted a choice of different stores.



Select **“Place all certificates in the following store”** and click **“Browse...”**



Please choose **“Intermediate Certification Authorities”** and confirm with **“OK”**



Please press "**Finish**" to complete the Import.

After successful import you will receive a message acknowledging that the import was successful.